

BUFFERS

THERMO[BUFFER™ INSULATING BULKHEAD

CARGO HANDLING & PROTECTION SOLUTIONS



PRODUCT DESCRIPTION

The BUFFERS THERMO BUFFER Insulating Bulkhead is a one-time-use disposable product that allows shippers to ship both frozen and chilled products in the same refrigerated container or trailer by dividing the container or trailer into two or more compartments.

LOW-COST SOLUTION ENABLES CONSOLIDATION OF BOTH CHILLED AND FROZEN PRODUCTS IN THE SAME CONTAINER OR TRAILER.

APPLICATION

The BUFFERS THERMO BUFFER Insulating Bulkhead is ideal for international restaurant chains and wholesalers of food products. It is already being used by a growing number of shippers to provide consolidated (frozen and chilled) refrigerated freight service such as from Florida to the Caribbean and Central America, from Costa Rica to the Caribbean and from the West Coast to Hawaii.

CHOICE OF MODELS

Model 1577: Insulating bulkhead for High-Cube (9'6"H) refrigerated containers. Packed 13 pcs on a pallet. Includes 36 pcs of foam blocks per bulkhead to block off T-Floor.

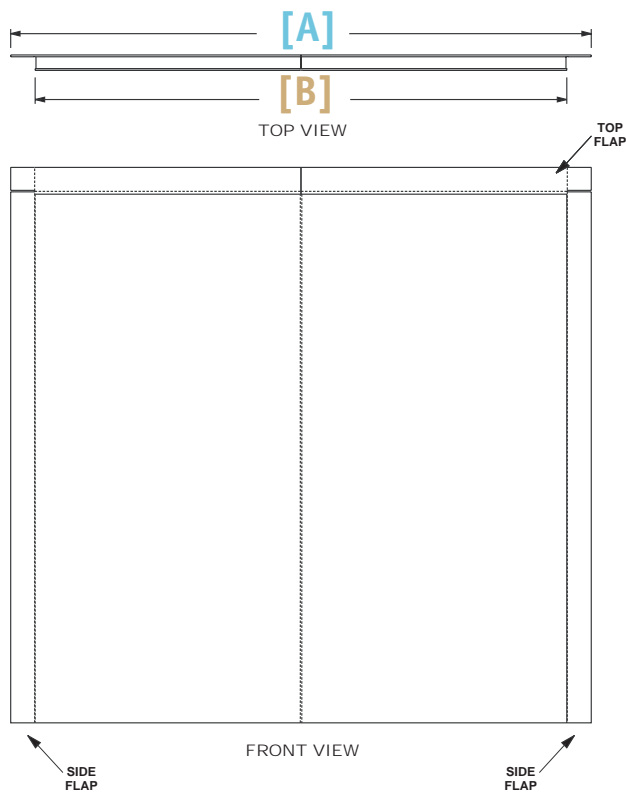
Model 1677: Insulating bulkhead for refrigerated trailers (108" to 111" inside H). Packed 13 pcs on a pallet. Includes 36 pcs of foam blocks per bulkhead to block off T-Floor.

Model 1977: Insulating bulkhead for standard height (8'6"H) refrigerated containers. Packed 13 pcs on a pallet. Includes 36 pcs of foam blocks per bulkhead to block off T-Floor.



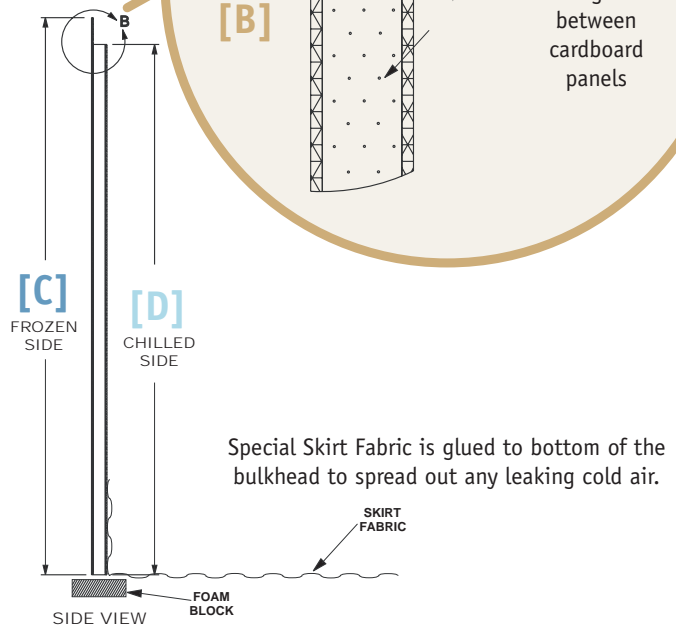
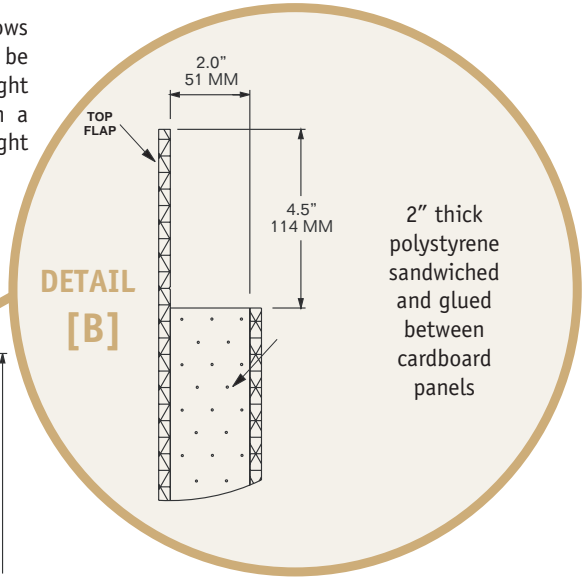
Securing Your Containers. Protecting Your Cargo.™

TECHNICAL SPECIFICATIONS



The Side Flaps allow the Bulkhead to be fitted in a 6" width range and to form a "gasket" for a tight fit.

The Top Flap allows the Bulkhead to be fitted in a 3" height range and to form a "gasket" for a tight fit.



Special Skirt Fabric is glued to bottom of the bulkhead to spread out any leaking cold air.

Foam Block 2"x4"x18" fits into floor grooves (36 PCS / PER Bulkhead).

MODEL	USE FOR	Fits Interior Size Range	BULKHEAD DIMENSIONS				Weight
			A	B	C	D	
7001-1577	9'6" High Reefer Containers	100-103" H 90-96" W	97.5" 2477 mm	89.3" 2267 mm	104.0" 2642 mm	99.5" 2527 mm	55.0 lbs 25.0 kg
7001-1677	45'-53' Reefer Trailers	108-111" H 94-100" W	101.0" 2565 mm	92.8" 2356 mm	112.0" 2845 mm	107.5" 2731 mm	65.0 lbs 29.5 kg
7001-1977	8'6" High Reefer Containers	88-91" H 90-96" W	97.5" 2477 mm	89.3" 2267 mm	92.0" 2337 mm	87.5" 2223 mm	41.0 lbs 18.6 kg

ORDERING INFORMATION

- Select model based on above configurations.
- All orders shipped in multiples of 13 pcs.
- Minimum order is 13 pcs.
- Available from stock or with 3-week lead time for production quantities of 65 pcs or more.

BUFFERS USA

Securing Your Containers. Protecting Your Cargo.™

Buffers USA Inc.
10180 New Berlin Road
Jacksonville, Florida 32226

Tel: 904-696-0010
Fax: 904-696-0019
Email: sales@buffersusa.com
www.buffersusa.com

BUFFERS THERMO|BUFFER™ BULKHEAD

INSTALLATION INSTRUCTIONS

Container / Trailer Preparation

NOTE: The following pages are for illustration purposes only.

In an actual installation you would:

- “Pre-chill” the container or trailer
- Load the frozen cargo first
- Install 2 pallets vertically as a spacer between the frozen cargo and the bulkhead
- Then install the BUFFERS THERMO BUFFER™ Thermal Insulating Bulkhead.

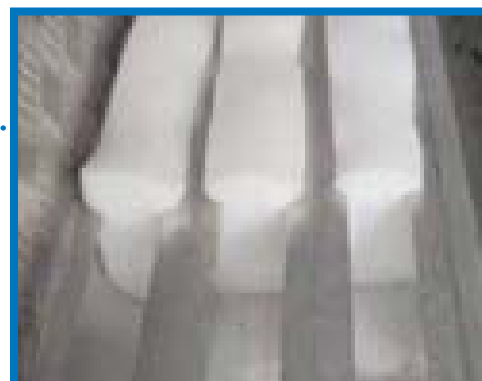
BUFFERS THERMO BUFFER™ Bulkhead, 40'

Install Foam Blocks

Start at the spacer pallets and install the foam blocks.
36 blocks are shipped with each bulkhead.
There are 36 floor rail slots in each container.

Start from either side of the container floor and insert foam blocks in every floor rail slot.
Make sure the top of the foam blocks extend above the floor rail.

When installed properly the foam blocks should touch the floor of the container and extend up over the top of the floor rails.
This will create an air seal from the bottom of the bulkhead to the floor.



BUFFERS THERMO|BUFFER™ BULKHEAD

INSTALLATION INSTRUCTIONS (CONT.)

Install the Bulkhead

Place the bulkhead in the container with the “bottom edge” on the foam blocks.

Position the bulkhead so it opens and rests on the “side edges”.

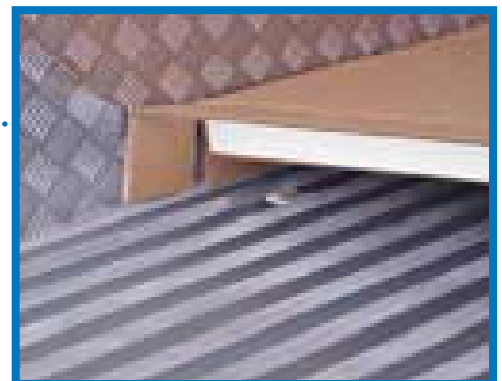
The laminated floor barrier material will fall to the floor.

Be sure the “bottom edge” stays lined up with the foam blocks.



Spread out the bulkhead until it touches the side walls.

The edge flaps should fold into place as shown at left.
Be sure to check both sides for proper fit.



BUFFERS THERMO|BUFFER™ BULKHEAD

INSTALLATION INSTRUCTIONS (CONT.)

Install the Bulkhead Cont.

Press down on the bulkhead until it is flat on the container floor. Then you can begin to lift the bulkhead into place.



Gradually lift the bulkhead into place. The “spacer pallets” will prevent the bulkhead from sliding. Leave the laminated floor barrier material on the floor.

While you are lifting the bulkhead into place check each side. The side flaps should fold into place to form a “gasket” between the edge of the bulkhead and the wall.



BUFFERS THERMO|BUFFER™ BULKHEAD

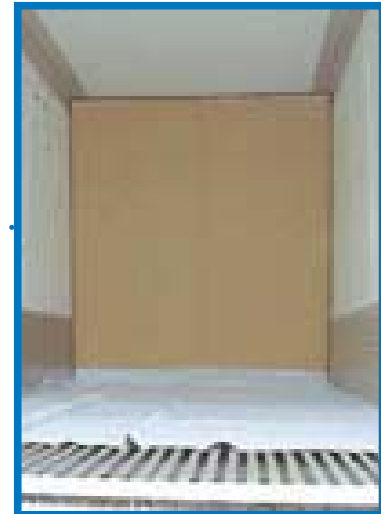
INSTALLATION INSTRUCTIONS (CONT.)

Install the Bulkhead Cont.

When almost completely vertical the top flap will start to fold over. This top flap then forms a gasket between the ceiling and the bulkhead.



Continue to press the bulkhead into place. Use adequate pressure to stand the bulkhead to the vertical position. Use equal pressure on the left and right sides of the bulkhead to prevent twisting and binding.



Unfold and spread out the laminated floor cover material. Be Easy! Do Not pull too hard or it may come unglued from the bottom of the bulkhead.



The floor cover material should extend to the side walls. The floor cover along with the foam blocks prevent freezing air from circulating under the bulkhead into the chilled section. You are now ready to load your Chilled Cargo. Laminated floor material is tough enough to load pallets with a forklift without tearing.